

The Washington Countian

BARTLESVILLE AREA HISTORY MUSEUM
PROTECT. COLLECT. PRESERVE. SHARE.

BAHM Presents PICKING FAVORITES

On display from
January 7th through April 7th

Did you know that the Bartlesville Area History Museum has over 215,000 items in our archives? Just like you have a favorite band or favorite television show, staff at BAHM have favorite items from the archive, most of which are rarely seen! Join us, as we feature staff favorites in our newest exhibit "Picking Favorites," on display from January 7th through April 7th! You can expect to see antique toys, medical equipment, local business memorabilia and more!



Bartlesville Area History Museum Presents "Picking Favorites"

This winter, BAHM is proud to present: "Picking Favorites" on display from January 7th through April 7th, the exhibit takes visitors on a visual journey showcasing BAHM's staff favorite things from our collection!

Did you know that the Bartlesville Area History Museum has over 215,000 items in our archives? Just like you have a favorite band or favorite television show, staff at BAHM have favorite items from the archive, most of which are rarely seen! Join us, as we feature staff favorites in our newest exhibit "Picking Favorites," on display from January 7th through April 7th!

You can expect to see antique toys, medical equipment, local business memorabilia, and more! Youngsters or the "young at heart" may enjoy our history of social life coloring station and gander through BAHM's turn of the century Nelson Carr One-Room School!

The Museum is open Monday through Friday, 8:00 a.m. – 4:00 p.m. (closed on weekends and holidays) at 401 S. Johnstone Avenue, 5th Floor.

Museum admission is free, but donations are always welcome. No reservation is necessary. If you have questions, you may reach Bartlesville Area History Museum staff at (918) 338-4290

or history@cityofbartlesville.org.

This Spring, the Bartlesville Area History Museum's temporary exhibit will feature the history of Washington County Restaurants! As a part of this exhibit, BAMH would like to ask the Washington County community to submit their favorite family recipes for the museum to use in creating a community cookbook! At the end of the exhibit, in July 2025, the cookbook will be revealed and sold in BAHM's gift shop!

BAHM is looking to add recipes in the following categories: appetizers, beverages, breakfast, breads, side dishes, soups, sandwiches, entrees, and desserts. Submissions may be sent to the museum email at history@cityofbartlesville.org or may be dropped off in person.

When submitting a recipe, please provide your name, contact information, a picture of the dish if possible and a brief description of how the recipe became a part of your family's history! Submissions are welcome from now until the end of August. Spots are limited, so send in your family recipe today!

THE BARTLESVILLE AREA HISTORY MUSEUM

Wants Your Family Recipes

SUBMIT YOUR FAVORITE FAMILY RECIPES FOR A CHANCE TO BE IN OUR COMMUNITY COOKBOOK!

SUBMISSIONS MAY BE SENT TO THE MUSEUM EMAIL AT [HISTORY@CITYOFBARTLESVILLE.ORG](mailto:history@cityofbartlesville.org) OR MAY BE DROPPED OFF IN PERSON. WHEN SUBMITTING A RECIPE, PLEASE PROVIDE YOUR NAME, CONTACT INFORMATION, A PICTURE OF THE DISH IF POSSIBLE AND A BRIEF DESCRIPTION OF HOW THE RECIPE BECAME A PART OF YOUR FAMILY'S HISTORY! SUBMISSIONS ARE WELCOME FROM NOW UNTIL THE END OF NOVEMBER. SPOTS ARE LIMITED, SO SEND IN YOUR FAMILY RECIPE TODAY!

BARTLESVILLE AREA HISTORY MUSEUM
401 S. JOHNSTONE AVE. 5TH FLOOR
MONDAY-FRIDAY | 8:00-4:00
WWW.BARTLESVILLEHISTORY.COM
918.338.4290

COLLECTIONS CORNER

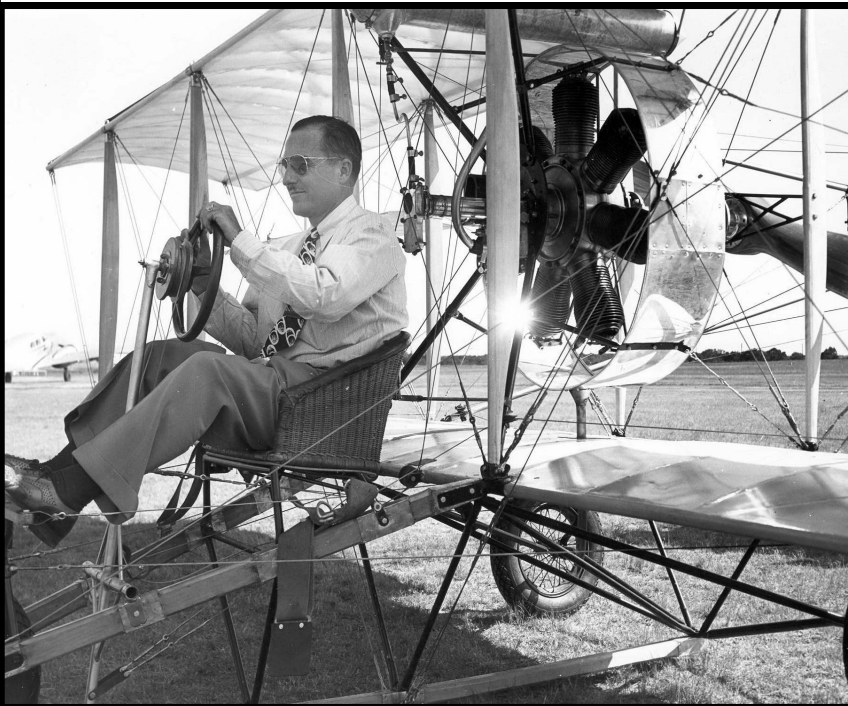
Casey Sullivan, Collections Manager

One of my biggest goals is reorganizing the 5000 square foot, climate-controlled collections storage room on 5th floor. Many items we've uncovered so far in there have unfortunately been on backlog, a problem many museums face, for years. In a museum setting, donated items are not automatically collected but really meander into the collection through a process called "accessioning". They undergo this process to determine 1.) If they fit the mission of the museum, 2.) If they help fill a gap in the collection, and 3.) Whether we already have that item. If so, we inspect the condition as well. Normally this process is done by myself or the Registrar and we then make an appropriate decision to return the item in question to the owner or accept it into the collection. I assume that there was an influx of donations around the time that the museum moved from the library to its current location. As usual, a relocation provokes excitement for new opportunities, events, or items. It gives a sense of starting over which is invigorating for a small museum, however, items that needed to be moved from the History Room at the old library coupled with new donations can flood the system and create years of backlogged donations. Our first step was to separate these donated, but yet to be accessioned items, from already-accessioned materials to create room to work in. Then, shelf by shelf, we can situate pieces into apposite categories. This project has also helped spur our newest exhibit, "Picking Favorites" ready on January 7th, 2025 since objects that have been buried for years are reemerging and finding a relevancy in our collection again. We hope to highlight some of these for your viewing and learning pleasure!



Picking Favorites?

By Shayla Cummins, Museum Coordinator



Our fall exhibit will take visitors on a visual journey showcasing BAHMs staff favorite things from our Archive collection, but what about pictures? Did you know we have roughly 170,000 pictures to help us with our preservation of local history? How could we possibly pick a favorite?

At the beginning of my career with BAHM the first exhibit I was a part of was "*A 50,000-Foot View: The Stratospheric Rise of Aviation in Washington County,*" and I fell in love with the story of a small-town boy that was bitten by the aviation bug during his high school years and how he built his first working airplane in his basement. Billy Parker was a part of the birth of aviation and had a fundamentally successful career working alongside Wiley Post and Frank Phillips! This picture was a part of that exhibit and is my favorite picture I have seen during my time with BAHM. It is of Billy Parker in his suit, tie and loafers, getting ready to take flight in his rustic airplane! To me, this photo represents a simpler time of innovation, success, and ambition!

In the Know With Nowlin

Denise Nowlin, Education Coordinator

Greetings from the Education Coordinator's desk at the Bartlesville Area History Museum. January will mark one year since I began working here at the Museum. It has been an enjoyable year filled with hosting many field trips, kids' camps, conducting research, and getting to know a little more about Washington County's history. It has been a pleasure meeting so many of you that have come to the museum, especially the kids who are fascinated by all of the unique memorabilia we have here. I have also enjoyed meeting so many descendants of the people that we honor here at the museum. Being able to meet the great-grandchildren of Nelson Carr, and various other people represented in the museum, has just made history come alive for me.

We had a great time in November at our Turkey Party. A big thank you to our Museum Coordinator, Shayla Cummins, for giving an excellent presentation on turkeys. Our Noon Year's Eve Party in December was also a hit. Special thanks go out to local storyteller, Fran Stallings, for providing such an excellent presentation at this event. It is so enjoyable watching kids having fun learning at both occasions. Of course, we want to thank everyone who came out for these events, as well. We love seeing young faces come to the museum, and we hope to see more people come out to our kid-friendly events in the future.

In the past few months, I have also begun going out into the community to give presentations to different groups. If you would like to schedule me to come give a presentation to your special group, I would be glad to talk to you! You can reach me at my email, drnowlin@cityofbartlesville.org, or telephone the museum at (918)340-4293. I have given my "Dying Art of Cursive Writing" at several different places, as well as another program entitled, "Bartlesville Christmas Traditions Throughout the Years". If there is another topic that you are interested in learning more about, please let me know.

I am currently working on a presentation that focuses on the wedding dress fashions seen here in Bartlesville over the years. I have found many pictures of various wedding dresses from the past century and it is interesting to see how fashions have changed over that span. Many of the photographs I have found were taken by our local photographers, Frank Griggs and Bob Heil, and are archived in the museum's database. I am still working on learning about the styles of various fashions in different decades of wedding dress history. If anyone out there is a fashionista, and would have any information about wedding dress styles during the 1930s to the present, I would love to chat with you and show you some of the different photographs that we have here in the museum.

Nelson Carr One-room School House

Calling all educators! Are you looking for a one of a kind educational opportunity in local history? Take a trip back in time, to 1910, in BAHM's turn of the century Nelson Carr one-room school house! With our schoolmarm, youngsters will receive lessons in penmanship, orthography (spelling), reading and arithmetic, while using an old fashion writing quill! Don't pass on this hands-on educational experience, call to book your appointment today, (918) 338-4290!



$$1+2=3$$



THERE'S ALWAYS SOMETHING EXCITING HAPPENING

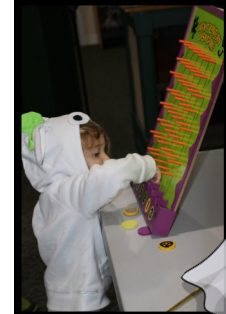
October 17

Education Coordinator, Denise Nowlin, explored the development of cursive writing, from the quill to the ballpoint pen. This was in connection with the Museum's new Social Life and Early



October 31

Featured is our second annual Spooktacular Halloween Walk and Costume Contest. Goblins 10 years or younger were guided through BAHM where they found candy stops and won spooky prizes at game stations.



November 14

The Corral Hat Bar out of Pawhuska set up a mobile, pop-up hat bar that offered BAHM guests hats in a wide variety of styles, shapes, colors, and endless options for accessories!



October

Our second annual Spooktacular Halloween Walk and Costume Contest Winner! The cutest little officer we have seen!



AT THE BARTLESVILLE AREA HISTORY MUSEUM!

November 15

November Lunch and Learn" event featured guest speaker Dr. Michelle M. Martin. Dr. Martin discussed how women and children in the Cherokee Nation suffered tremendously during the American Civil War. Hannah Worcester Hicks, the daughter of famed missionary Samuel Austin Worcester, and her Cherokee husband Abijah Hicks lived near Fort Gibson as the war raged in the western Ozarks. Hannah's diary provides community members, her descendants, and scholars with insight into the chaos of war in the Ozarks, the important connections between the Cherokee Nation's citizens and communities like Van Buren and Fort Smith, and the intense division at work in the Cherokee Nation at a critical time for the nation's survival.



November 25

During Thanksgiving Break BAHM hosted our first ever Turkey Party! This event was for little wranglers aged 3-12, to enjoy a turkey-themed craft as Museum Coordinator, Shayla Cummins, talked about fun turkey history. We buttered them up with all kinds of interesting facts about the old Scudder Turkey Farm!



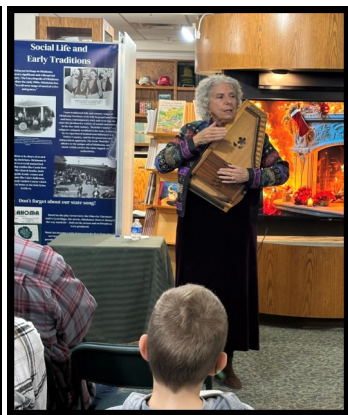
December 23

Santa came to the Bartlesville Area History Museum to read a story and tell kids about his Christmas plans! We had a special craft for the kids and a holiday-themed coloring station for little ones to enjoy with refreshments, and candy canes!

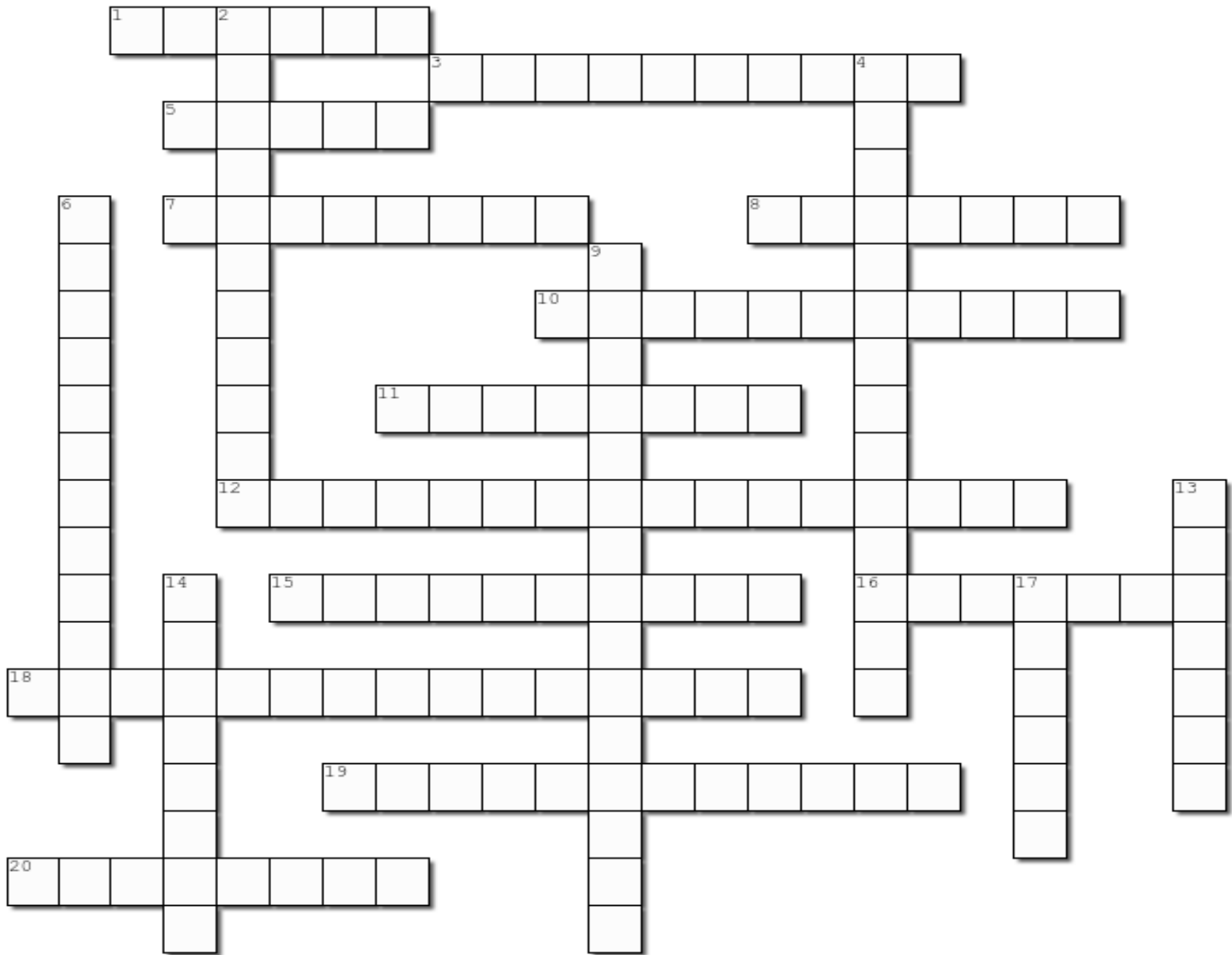


December 31

We kicked off our first annual Noon Year's Eve Party with Bartlesville's very own world-class storyteller, Fran Stallings!



Test Your History Knowledge



Created using the Crossword Maker on TheTeachersCorner.net

Across

1. Bartlesville's First Newspaper
3. Who Opened the Crystal Ice Plant
5. Hotel at SW 4th Street and Johnstone Avenue
7. Hotel at NW 3rd Street and Johnstone Avenue
8. First Mayor of Dewey
10. Popular Bartlesville photographer
11. Phillips and Goebel Airplane
12. Co-Founder of Phillips Petroleum Company
15. Bartlesville Railway System
16. Osage County Gingerbread Mansion
18. First Commercial Oil Well
19. Oil Well that led to Phillips Petroleum Co
20. First Mayor of Copan

Down

2. Legendary location where cars roll uphill
4. Original Chamber of Commerce
6. First Chamber of Commerce President
9. Founder of REDA Pump
13. First Mayor of Bartlesville
14. Indian tribe headquartered in Bartlesville
17. Hotel at NE 2nd Street and Johnstone Avenue

* ***Find the answers in our next Newsletter in July!!***

CALENDAR OF EVENTS

Opening of the BAHM new exhibit from January 7 through April 7, 2024 “Picking Favorites”

This Exhibit takes visitors on a journey showcasing BAHM’s staff favorite picks from our archive and collection!

January 17, 2025— George Miksch Sutton Avian Research 12:00 p.m. to 1:00 p.m. Bring your lunch and Learn the history of George Miksch Sutton Avian Research, with a special guest!

February 13— **Date Night** 6:00 p.m. to 9:00 p.m. Catered dinner and film. Details to follow.

February 20— **Famous Local Weddings with Denise Nowlin**— Bring your lunch and Learn about some of Washington County’s famous weddings!

March 18-19— **Children's Birds-Eye View Spring Camp with Denise Nowlin**.-Tuesday March 18th and Wednesday March 19th, 1:00-3:00 PM. Ages 5 to 11 years of age may join us as we learn about native species of birds and go bird watching! A craft and light snacks provided.

March 20, 2024—**History of Notable local woman with Betty Keim** 12:00 p.m. to 1:00 p.m. Bring your lunch and Join us as former education coordinator, Betty Keim, gives a discussion on the history of notable local women.

April 12, 2025— **Charcuterie with the Easter Bunny**, 9:00 a.m. – 11:00 a.m. Children 10 years or younger, free event with the opportunity to purchase a charcuterie box to dine with the Easter Bunny while enjoying crafts and holiday themed coloring station and free pictures with the Easter Bunny.



Oklahoma’s state capitol building is the only capitol with an oil well directly underneath it. In 1941, the “Petunia Number One” well was slant drilled through a flowerbed to reach the oil pool, which produced approximately 1.5 million bbl. over the course of 43 years.

DAY IN THE REGISTRAR’S LIFE



During the 100-mile sale, a local man found a framed panorama of Ochelata Public School in 1925. During this time G.E. Spraberry was the superintendent. On the back of the frame was a list with the names of almost everyone in the photo. You never know what you will find at a sale. Thank you to Barry Swanson for this really cool find.

WHAT’S IN YOUR ATTIC?

Want to donate a family heirloom, antique find, photos or other materials?

Please contact Kasey Werts at (918) 338-4290 or kawerts@cityofbartlesville.org

MUSEUM STAFF

Director, Kiley Roberson
Assistant Director, Cindy Yell
Collections Manager, Casey Sullivan
Museum Coordinator, Shayla Cummins
Registrar, Kasey Werts
Education Coordinator, Denise Nowlin
Museum Clerk/Temp, Tamra Rogers

VISITATION STATS

Visitors for 2024 to date: 3,274

States: AL, AK, AR, AZ, CA, CO, FL, GA, IA, IL, IN, KS, KY, LA, MA, MD, ME, MN, MO, MS, NC, NE, NM, NY, NV, OH, OK, OR, PA, RI, SD, TN, TX, WA, WI, WV

Countries: USA, Canada, France, India, Mexico, New Zealand, Puerto Rico, Saudi Arabia, Singapore, Uruguay, United Kingdom.



The BAHM newsletter is virtual! Join our mailing list to stay up to date on what's happening at the Museum. Scan the QR code with your cell phone camera to be taken to a form to sign up for the E-Newsletter. You'll get reminders about special events, guest speakers, and much more!

Bartlesville Area History Museum

401 S. Johnstone Avenue, 5th Floor

Bartlesville, OK 74003

Phone (918) 338-4290

Web: www.bartlesvillehistory.com

Email: history@cityofbartlesville.org

Past Perfect online database:

bartlesvillehistory.pastperfectonline.com



@bartlesville_area_history



BartlesvilleAreaHistoryMuseum

MUSEUM HOURS

Monday - Friday: 8:00-4:00

Closed Saturday, Sunday, and Holidays



AASLH

American Association
for State and Local History

Bartlesville Area History Museum
401 S. Johnstone Ave. - 5th Floor
Bartlesville, OK 74003

